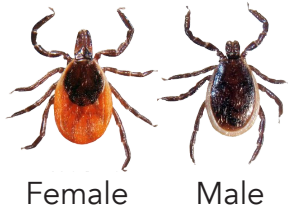


# Identifying Ticks in New Hampshire

## IDENTIFYING TICKS

**Blacklegged Ticks**  
(aka Deer Ticks)  
*Ixodes scapularis*



Female Male



Actual Size

**Dog Ticks**  
*Dermacentor variabilis*

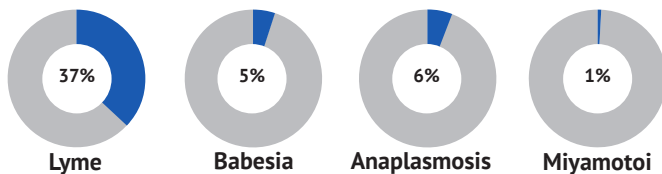


Female Male

## DISEASE DATA

### Blacklegged Ticks

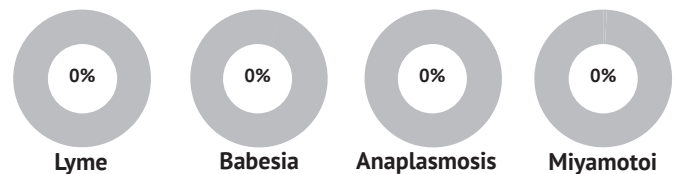
Blacklegged Tick-Borne Diseases found in NH



Out of 2,876 Blacklegged ticks (deer ticks) tested.

### Dog Ticks

Dog Tick-Borne Diseases found in NH



There's no evidence dog ticks carry Lyme. Out of 1,041 dog ticks tested, only one was positive for *F. tularensis*.

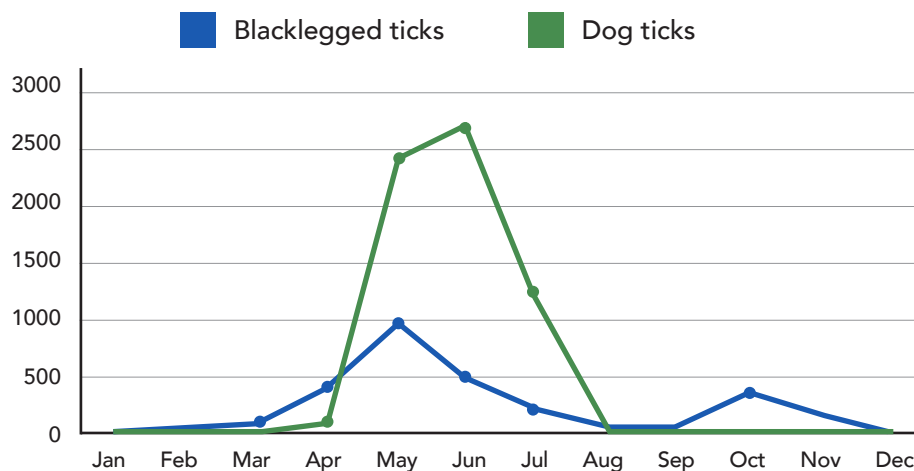
## TICK SEASONS

### Blacklegged Ticks



#### TWO SEASONS

- Spring season peaks in May
- We see BLT as early as March
- Fall season peaks in October



### Dog Tick



#### ONE SEASON

- Spring-summer
- Peaks in June

Please consider donating to BeBop Labs, a nonprofit that researches, gathers, and disseminates scientific data and knowledge to the public on impacts to health and the environment. Donations are tax deductible and 100% goes directly to supporting our purpose. We greatly appreciate your support. Mail checks to PO Box 183, Salisbury, NH 03268.

