

# WHAT TO DO WHEN YOU FIND A TICK

Is the tick attached (biting)?

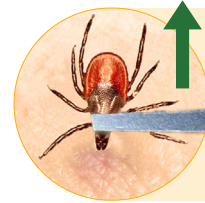


## Mail Tick

Put tick in sealed bag and mail to BeBop Labs along with answers to the following questionnaire.

**BeBop Labs**  
**PO Box 183**  
**Salisbury, NH 03268**

## Remove Tick



Use tweezers to grasp tick close to skin. Pull upward on tick. Clean bite area.

Is the tick a blacklegged tick (aka deer tick)?

## IDENTIFYING TICKS

**Dog Ticks**  
(aka Wood Ticks)

Female Male  
*Dermacentor variabilis*

**Blacklegged Ticks**  
(aka Deer Ticks)

Female Male  
*Ixodes scapularis*

Blacklegged ticks can carry Lyme Disease in New England.

*Actual Size*

## COLLECTION QUESTIONS

- DATE** tick was found.
- NUMBER** of ticks found.
- LOCATION** tick was found.
- ACTIVITY** during tick discovery.
- On **WHOM** tick was found. (Human or pet)
- Whether tick was **BITING** or **CRAWLING**.
- If **BITING**, where on person/pet.
- If **BITING** human, age of person.

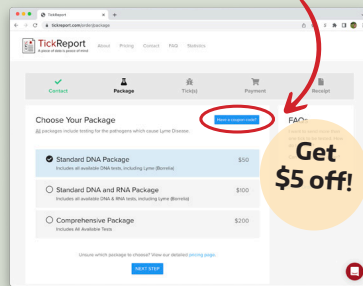
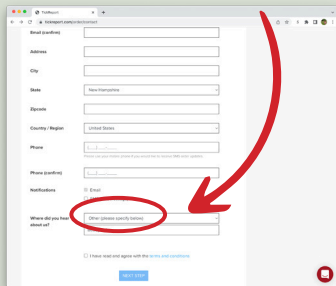


Are you worried about contracting a disease?



Referral: **Bebop Labs**

Coupon code: **bebopticks**



For immediate disease carrying information, order a tick test at **TickReport.com**.

Use our referral and coupon code for \$5 off.

Did the tick test positive for Lyme Disease?



Inform doctor and move on with life!



Consult with a Lyme-literate doctor