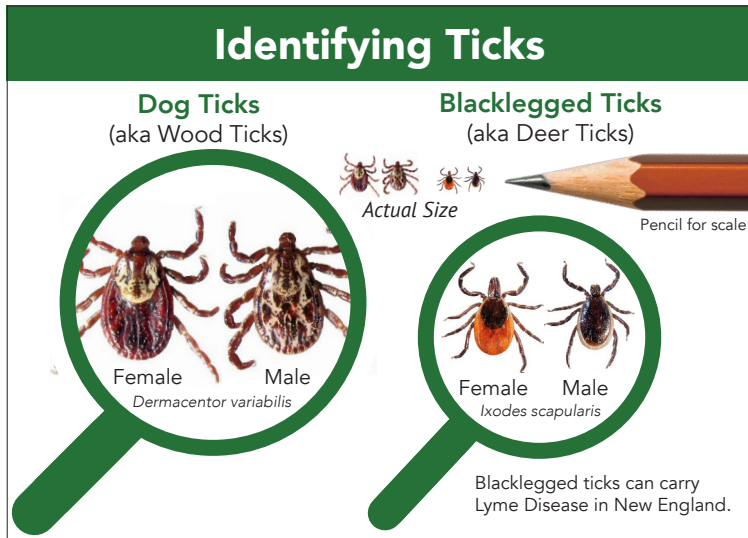


Tick Check

Blacklegged (Deer) and Dog Ticks

Identifying Ticks



Remove Ticks

Use tweezers to grasp tick as close to skin as possible. Pull upward. Once out, clean bite area.



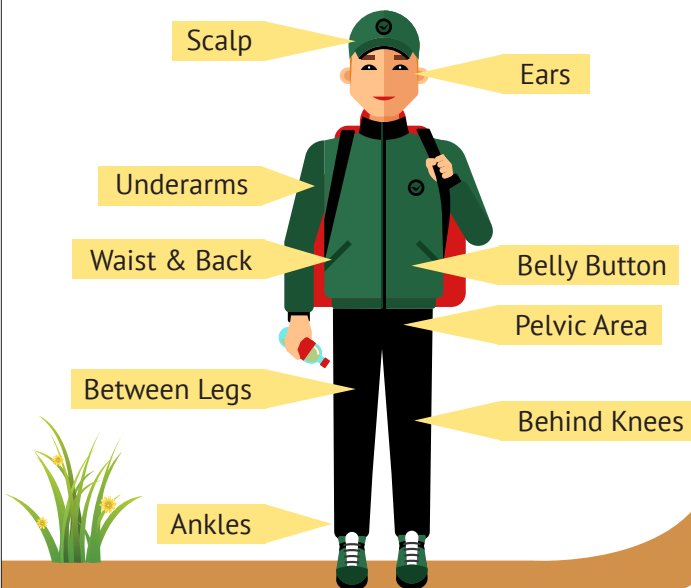
Avoid Tall Grass

Keeping to the designated trails will help to prevent tick bites on you and pets.



Tick Checks

Conducting tick checks of yourself and pets after using this recreational space is advised. Ticks love places which are hot and hairy.



Send Ticks for Research

BeBop Labs is a non-profit organization that collects data on ticks YOU find. Be part of this public health research by mailing us your ticks.

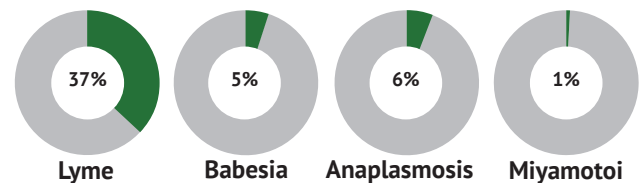


Put tick(s) in bag and mail it with info from questionnaire to:

BeBop Labs
P.O. Box 183
Salisbury, NH
03268

Disease Data

Tick-Borne Diseases found in NH from 2019-2021



Out of over 2,500 Blacklegged ticks (aka deer ticks) tested, 38% carried pathogens from the genus *Borrelia*, which is the bacteria that causes Lyme Disease.

Collection Questions

DATE tick was found.
NUMBER of ticks found.
LOCATION tick was found.
ACTIVITY during tick discovery.
On **WHOM** tick was on. (human/pet)
Tick **BITING** or **CRAWLING**.
If **BITING**, where on person/pet.
If **BITING** human, age of person.

For more information on tick species in your area go to BebopLabs.org

